

Transport and Travel Slideshow

A collection of images from Museums Victoria depicting modes of transport from the twentieth century.





Family
Camping, St
Leonards VIC

Photographer:
Unknown



The paddle
steamer 'Gem'
on Lake
Wendouree.

Photographer:
Taylor Studio



Motor cycles and
vans at a local
Shire Road camp

Photographer:
Unknown



Members of light
horse brigade in
camp at
Broadmeadows,
1929
Photographer:
B McGeehan
Studio



The first Royal
Mail van in
Ararat.

Photographer:
Unknown



The DC2 flown by Parmentier and Moll for KLM in the MacRobertson Centennial Air Race (from England to Australia), refueling in Darwin. They came second in the race.

Photographer: Unknown



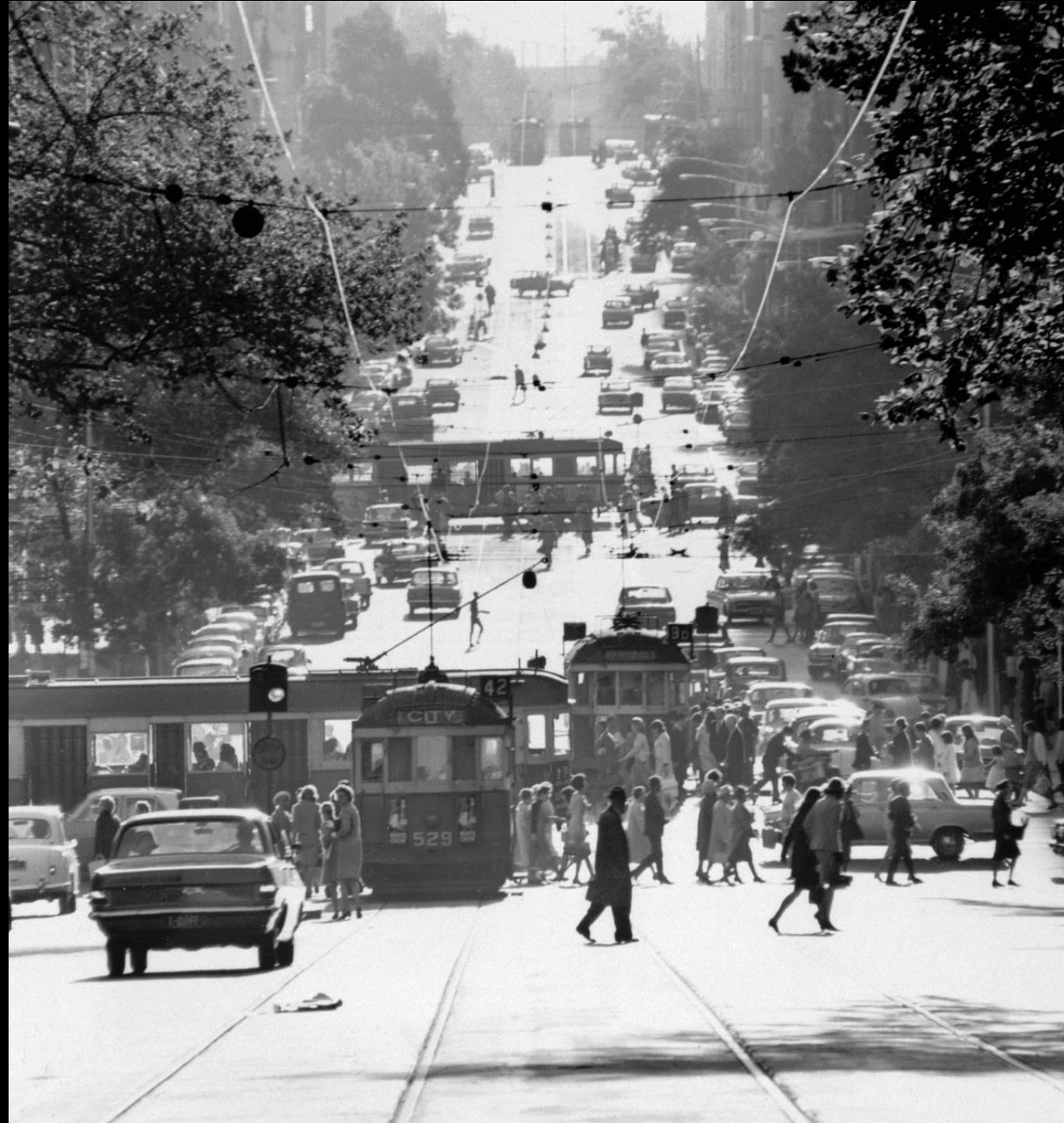
A man standing by a boat
and carrying a number of
ducks strung on a pole or
oar

Photographer: Unknown



A gypsy moth of
the Ballarat Aero
Club.

Photographer:
K.H. Wilkie



Black and white
photograph of lower
Collins Street from Russell
Street, 2 Jan 1967

Photographer: Mark Strizic



Melbourne transport strike
on the corner of Flinders
and Swanston Streets.

Photographer: Unknown



The Mackay family
arrive at Station Pier
on the S.S. Cameronia.

Photographer:
Unknown



A ship pulled by tug into
Port Melbourne.

Photographer: Unknown



Three girls riding
their bikes.

Photographer:
Unknown



The 'Gippsland'
steamer leaving
Bairnsdale on the
Gippsland Lakes

Photographer:
Unknown



Man on a bicycle,
holding a dog.

Photographer:
Unknown



A man, woman and three children in a boat made from corrugated iron.

Photographer: Unknown



Rail motor
travelling past the
Grand Hotel,
Mildura VIC

Photographer:
Unknown



The McLaughlin family beside their horse-drawn harvester.

Photographer:
Unknown



A woman, a small boy and a small girl with their bicycles.

Photographer:
Unknown



Four children on
horseback.

Photographer:
Bill Boyd



State Rivers and
Water Supply
Commission TD24
tractor atop a flat-bed
transporter truck,
parked near the
Exhibition Buildings.

Photographer:
Unknown



Bride entering a
car as flower girl
watches.

Photographer:
Richard Seeger



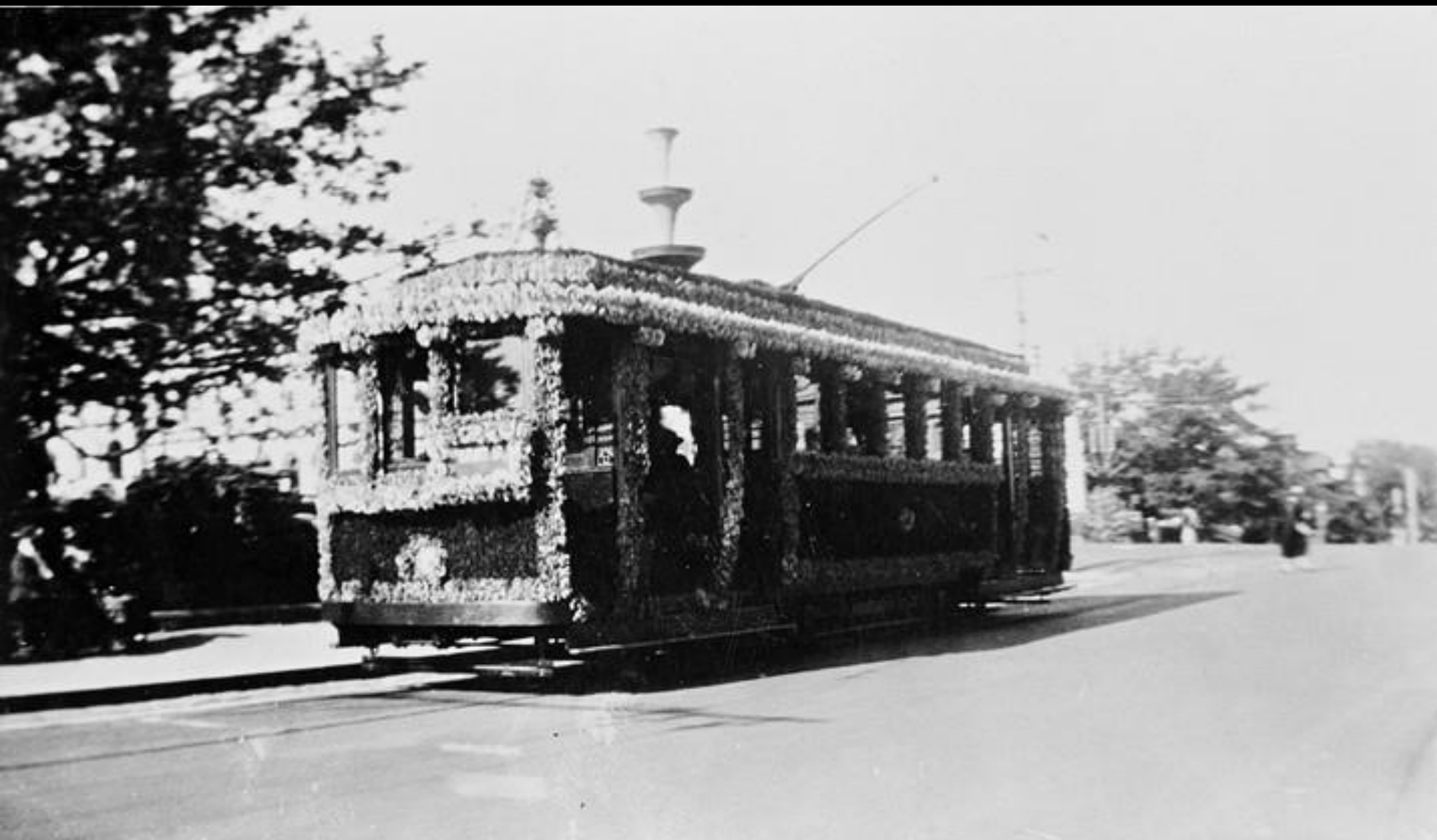
A man and woman
with their car and
caravan at Kyneton
mineral springs.

Photographer:
Unknown



A group of people on a Picnic with two cars in background.

Photographer:
Unknown



Tram Decorated for
Centenary
Celebrations, Ballarat,
Victoria, 1938

Photographer:
Jane Holmes

FIRST PLANE TO FLY OVER PORTLAND DOWNS - 31-8-20

PEACE LOAN. CAPTAIN. COLE.



First plane to fly to 'Portland Downs' station. The pilot was Captain Cole. The aircraft is an Avro 504, QLD

Photographer:
Hamilton



Alf Turner in his 1947
Vauxhall, Victoria,
c.1950

Photographer:
Unknown



Decorated shop fronts.
Part of the celebrations
for Ballarat Gala Day

Photographer:
Unknown



A woman in an
aeroplane wearing a
scarf, goggles and cap

Photographer:
Laurie Richards



Southern Airlines Ltd,
Passengers Disembarking,
Essendon

Photographer: Laurie Richards



A man sitting on a bike
with a girl holding on to
him from behind, in front
garden of house.
Yarraville, VIC

Photographer:
Laurie Richards



Peters Ice Cream (Vic) Ltd,
Delivery Truck, Melbourne,
Victoria, 1957

Photographer: Laurie Richards



Tram Conductor in a Grip Cable
Tram

Photographer: Unknown



Woman sitting in an aeroplane seat while she holds a small child on her lap.

Photographer: Laurie Richards



Men and four Ford trucks
outside Ford Motor Company of
Australia, Cartage Contractors in
West Melbourne.

Photographer: Laurie Richards



Associated Equipment Company,
four men standing in front of a
Bus

Photographer: Laurie Richards



Woman boarding a bus at
Dorcas Street, North
Melbourne.

Photographer: Laurie Richards



Woman with firemen seated in a
Metropolitan Fire Brigade truck
at the Royal Women's Hospital

Photographer: Laurie Richards



A truck driver, sitting in a truck cabin, signing a clipboard held by a male storeman on a bicycle, in the dispatch area of an A.P.M. paper mill.

Photographer: Laurie Richards



A delivery driver, wearing a uniform, leaning against a Swallows biscuit truck with large logo painted on side.

Photographer: Laurie Richards



"Traffic Scene" view of Swanston Street looking south from Collins Street, towards St. Paul's Cathedral. A large number of trams are travelling along the street.

Photographer: Laurie Richards